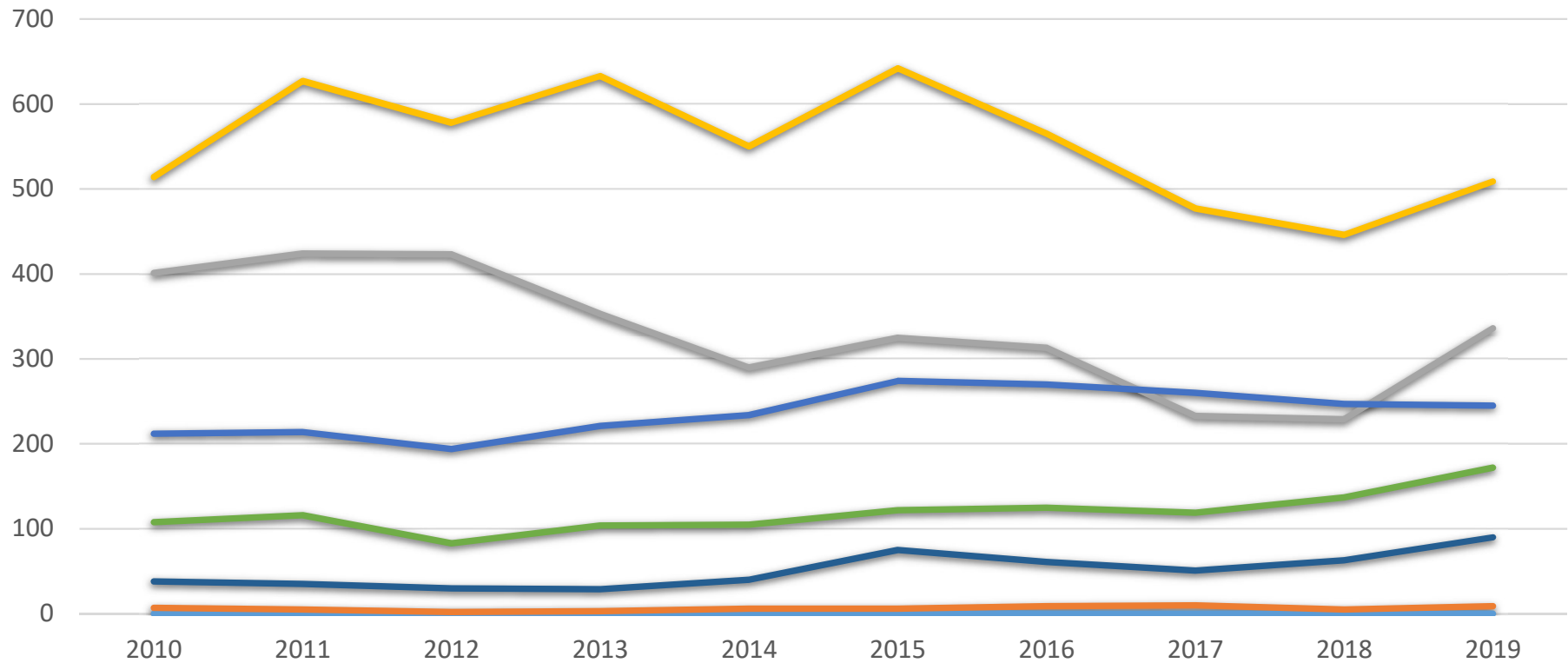
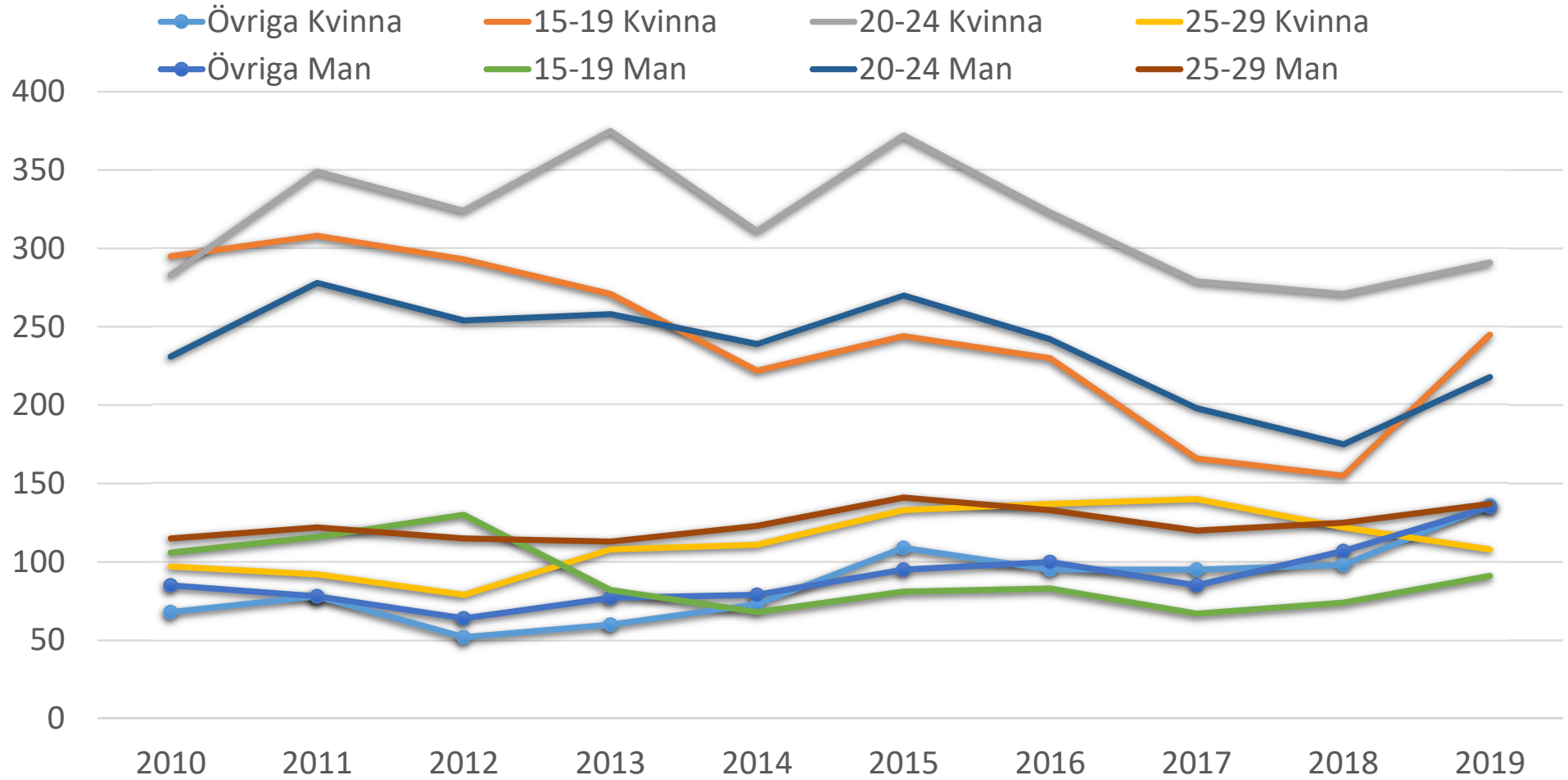


Klamydia per åldersgrupp - anmälda fall 2009-2018

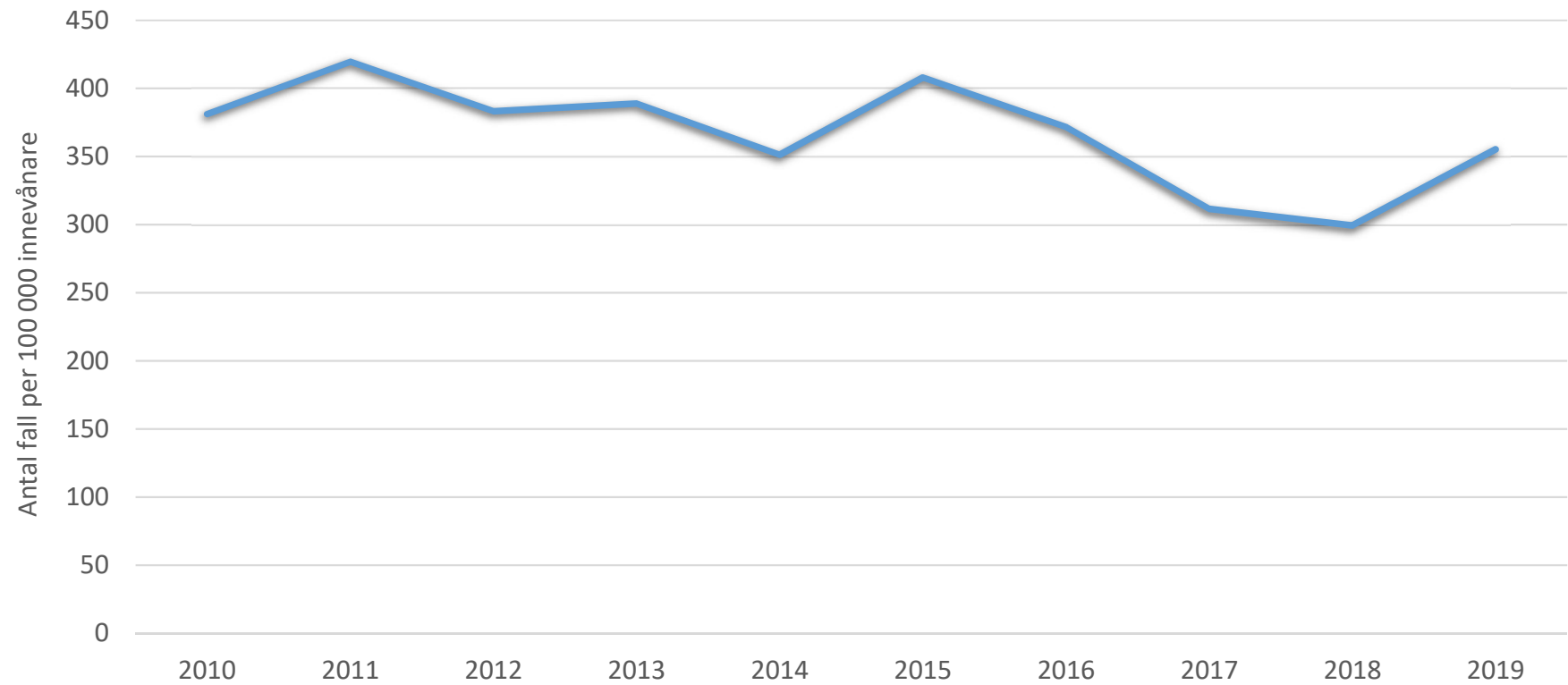
— 0-9 — 10-14 — 15-19 — 20-24 — 25-29 — 30-39 — 40+



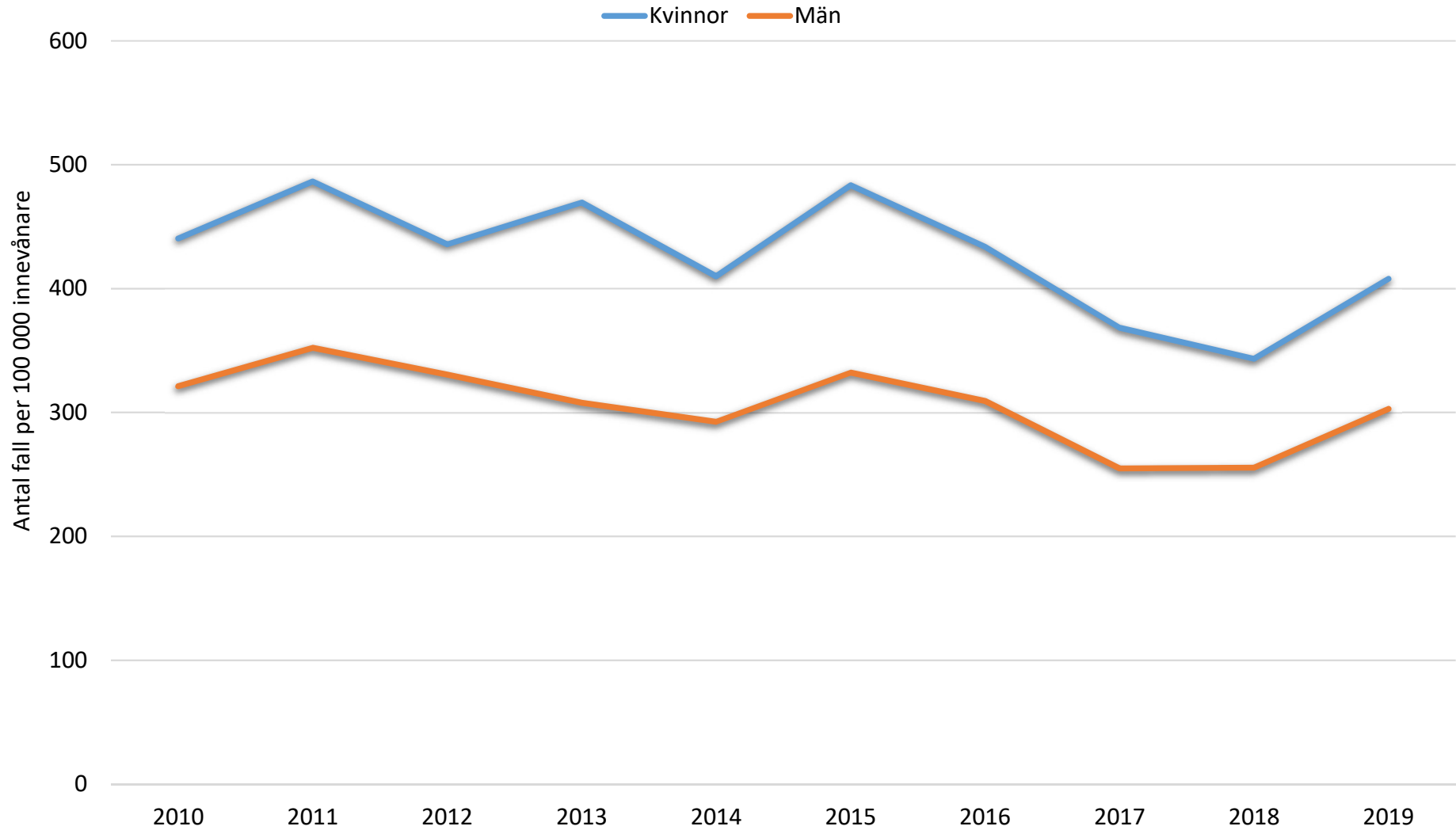
Klamydia per åldersgrupp och kön - anmälda fall 2010-2019



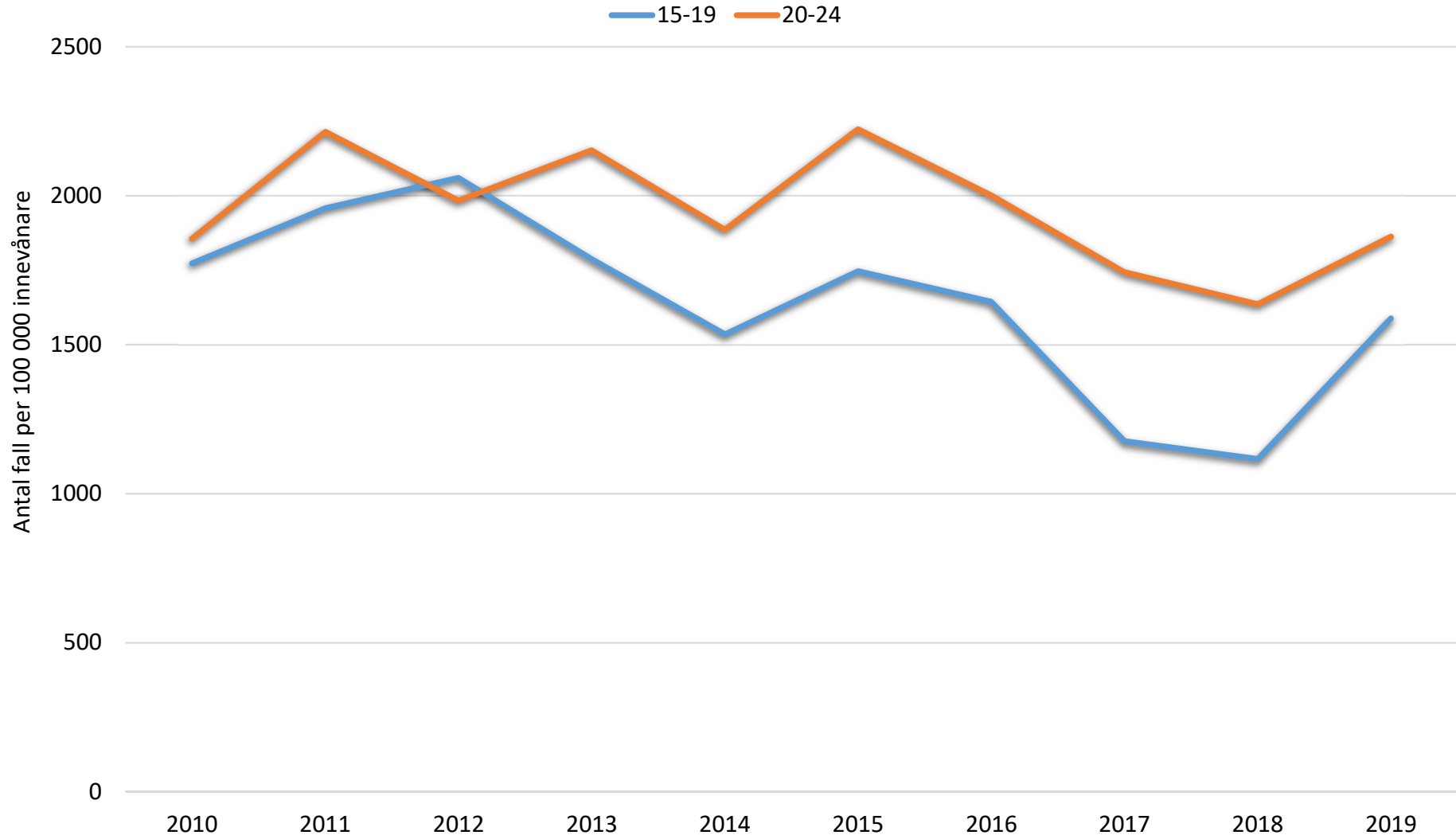
Klamydia - Incidens 2010-2019



Klamydia - Incidens per kön 2010-2019



Klamydia - Incidens per åldersgrupp 2010-2019



Incidens per kön, åldersgrupp och år 2009-2018

